

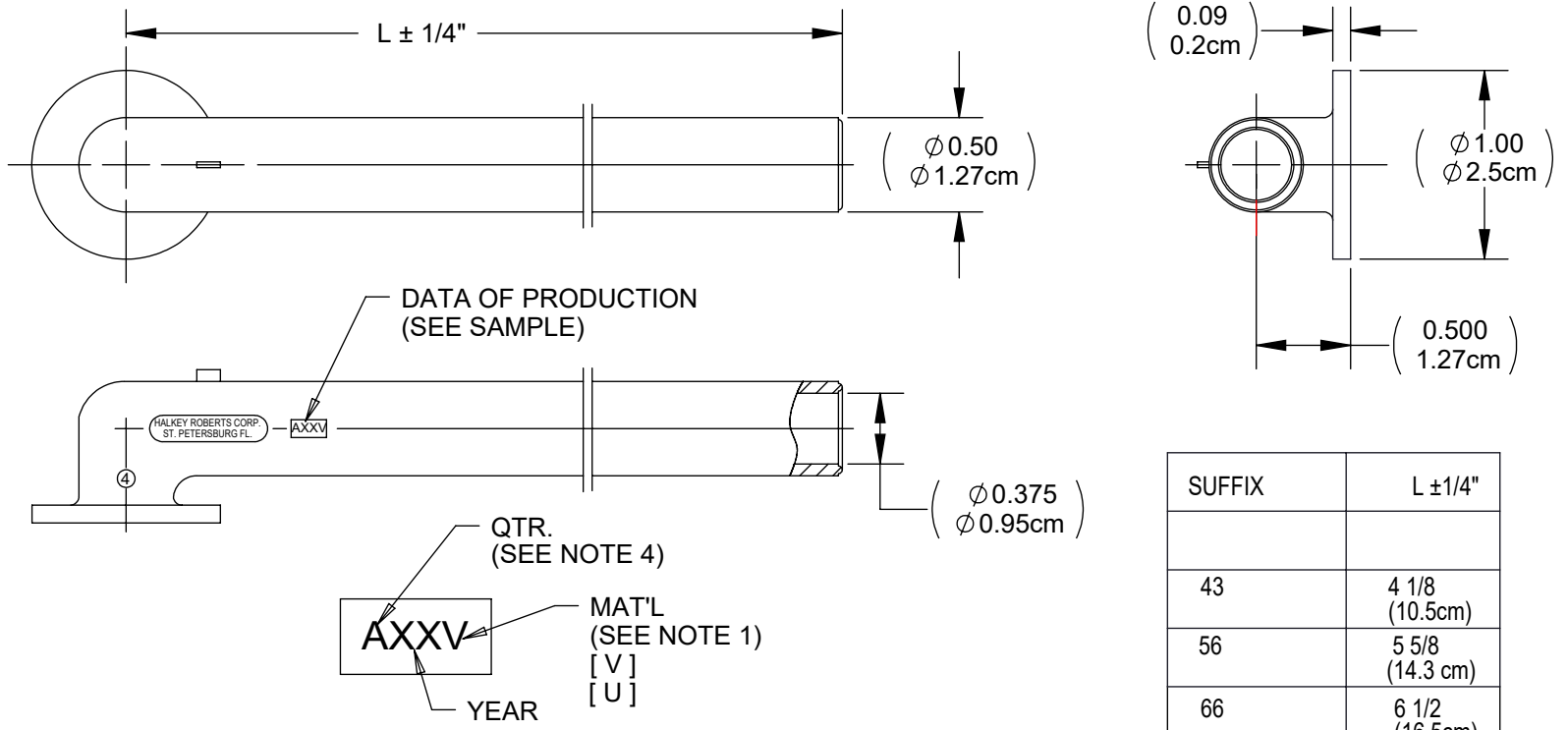
DRAWING NO.
C727ACUXXX

REV
G

Customer Drawing

REVISION HISTORY

REV	DESCRIPTION (ECO)	DATE	APPROVED
F	ADD 125 SUFFIX OPTION ECO 11332	10/04/21	SR
G	REMOVE SUFFIX 125 ECO 13141	10/27/25	DK



SUFFIX	L $\pm 1/4"$
43	4 1/8 (10.5cm)
56	5 5/8 (14.3 cm)
66	6 1/2 (16.5cm)

TOOLING	PART NO.	IFU
SEALING DIE: OR	SD727 D727AC	----- -----

NOTES:

- FIRST SUFFIX "X" INDICATES MATERIAL:
NO SUFFIX - PVC/POLYURETHANE BLEND - [V]
S - POLYETHER URETHANE ESTANE, OR TEXIN - [U]
- SECOND SUFFIX "X" INDICATES "L" LENGTH (SEE TABLE)
- THIRD SUFFIX "X" INDICATES COLOR:
NO SUFFIX - RED
BK - BLACK
- FOR QUARTERLY IDENTIFICATION USE:
A - FIRST QUARTER
B - SECOND QUARTER
C - THIRD QUARTER
D - FOURTH QUARTER
- CRITICAL DIMENSIONS ARE CIRCLED AND SUBJECT TO INSPECTION.
- DIMENSIONS IN PARENTHESES ARE FOR REFERENCE ONLY.
- ALL DIMENSIONS ARE IN INCHES, WITH NOMINAL IN METRIC BELOW.

MOLDED PARTS:
GATES, PARTING LINES, AND FLASH PER QUALITY CRITERIA

PROPRIETARY AND CONFIDENTIAL
THE INFORMATION CONTAINED IN THIS DRAWING IS SOLE PROPERTY OF HALKEY-ROBERTS CORPORATION ST. PETERSBURG, FL. ANY REPRODUCTION IN PART OR AS A WHOLE WITHOUT THE WRITTEN PERMISSION OF HALKEY-ROBERTS CORPORATION IS PROHIBITED.

DRAWN BY	M.S.	DATE	08/08/97
APPROVED BY		DATE	
MATERIAL			
FINISH			
UNLESS OTHERWISE SPECIFIED: DIMENSIONS ARE IN INCHES TOLERANCES: ANGULAR: $\pm 1^\circ$ TWO PLACE DECIMAL $\pm .01$ THREE PLACE DECIMAL $\pm .005$	THIRD ANGLE PROJECTION		

HR[®] Halkey-Roberts[®]

TITLE **ANGLE CONNECTOR**

SIZE **A** DRAWING NO. **C727ACUXXX** REV **G**

SCALE **1:1** **DO NOT SCALE DRAWING** SHEET **1 OF 1**